



AS YOU SOW



# Is Your Company's 401(k) Plan Aligned with Your Values?

Andrew Behar  
CEO  
*As You Sow*

Cory Donovan  
Executive Director  
*ImpactPHL*

Michael Cosack  
Principal  
*ImpactWise*



### **About ImpactPHL:**

ImpactPHL is a 501(c)3 non-profit dedicated to growing the Greater Philadelphia region's impact economy. We do this by helping people and organizations align their financial assets with their values. This includes investors large and small, foundations, family offices, social entrepreneurs, and business leaders.

### **Our Vision:**

ImpactPHL envisions Greater Philadelphia as a leader in the global impact economy. By aligning our collective financial assets and regional economy with social and environmental goals, we will create an inclusive, sustainable, and resilient economy that works for all of our citizens.

# ImpactPHL Annual Partners

LEADERS



PARTNERS

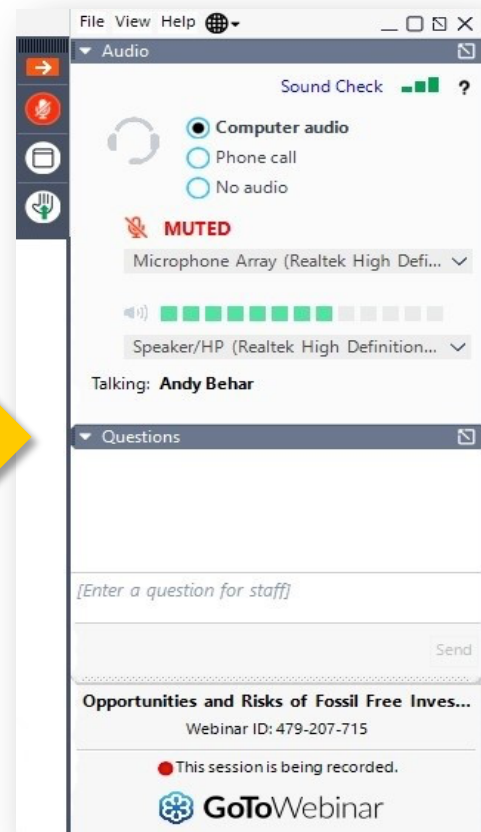


**With additional support from:**

Laura Kind McKenna, Tony Hitschler, Leigh Wood, Chrissy Kind, Chris Pappo, Justin Turner, and John Moore.

# Audience Q&A

Use the Q&A window to send us your questions



# Thank you!

To get started with aligning your 401k with your values and shareholder advocacy, contact us for an introductory call.

Cory Donovan | Executive Director, ImpactPHL – [cory@impactphl.org](mailto:cory@impactphl.org)

Andrew Behar | CEO, *As You Sow* – [abehar@asyousow.org](mailto:abehar@asyousow.org)

Namita Verma | Development Coordinator, *As You Sow* – [namita@asyousow.org](mailto:namita@asyousow.org)

Michael Cosack | Principal, ImpactWise – [cosackm@impactwise.us](mailto:cosackm@impactwise.us)



# Legal Disclaimer

**The information provided on this webinar and all reports is provided “AS IS” without warranty of any kind.** *As You Sow* makes no representations and provides no warranties regarding any information or opinions provided herein, including, but not limited to, the advisability of investing in any particular company or investment fund or other vehicle. While we have obtained information believed to be objectively reliable, neither *As You Sow* nor any of its employees, officers, directors, trustees, or agents, shall be responsible or liable, directly or indirectly, for any damage or loss caused or alleged to be caused by or in connection with use of or reliance on any information contained herein, including, but not limited to, lost profits or punitive or consequential damages. Past performance is not indicative of future returns.

***As You Sow* does not provide investment, financial planning, legal, or tax advice.** We are neither licensed nor qualified to provide any such advice. The content of our programming, publications, and presentations is provided free of charge to the public for informational and educational purposes only, and is neither appropriate nor intended to be used for the purposes of making any decisions on investing, purchases, sales, trades, or any other investment transactions.

Our events, websites, and promotional materials may contain external links to other resources, and may contain comments or statements by individuals who do not represent *As You Sow*. *As You Sow* has no control over, and assumes no responsibility for, the content, privacy policies, or practices of any third party websites or services that you may access as a result of our programming. *As You Sow* shall not be responsible or liable, directly or indirectly, for any damage or loss caused or alleged to be caused by or in connection with use of or reliance on any such content, goods, or services available on or through any such websites or services.